

SH

SPRING HANGER ISOLATOR

1" (25mm) Deflection

FEATURES

Epoxy Powder Coated Bracket and Spring Coil

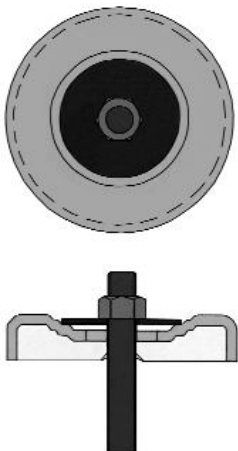
DESCRIPTION

NSV Model SH vibration isolation hangers consist of free-standing, large diameter, laterally stable steel springs in series with an elastomer-inshear insert, assembled into a stamped or welded hanger bracket. To assure stability, the spring element has a minimum lateral spring stiffness of 1.0 times the rated vertical stiffness. Hangers with properly deflected coils will allow a support rod misalignment through a 30° arc without short circuiting. Hangers are available in deflections 1" (25 mm), and in capacities from 10 to 750 kg. NSV Model SH hangers are recommended for the isolation of vibration produced by suspended mechanical equipment, low-speed suspended fans, transformers, ductwork, piping, etc.

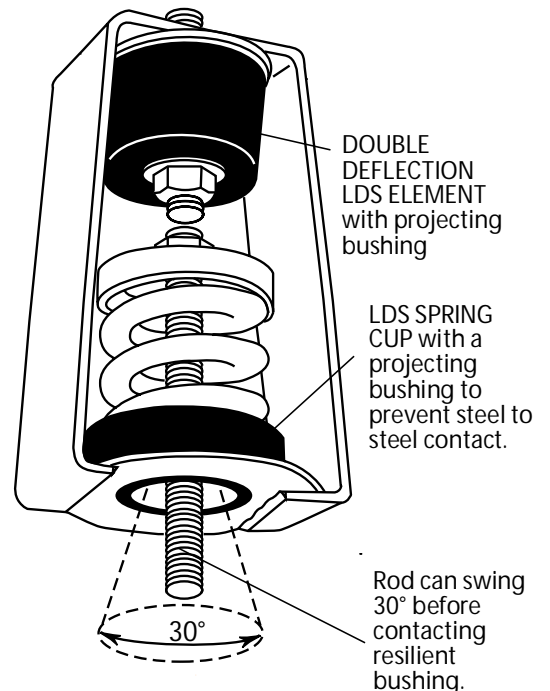
APPLICATION

NSV Model SH hangers are used to isolate suspended sources of both noise and vibration. Suspended mechanical equipment such as in-line fans, cabinet fans, and piping and ductwork in close proximity to mechanical equipment are typical uses of Model SH hangers

Self-Centering



Indexed steps in spring cap correspond to standard washer diameters for the appropriate rod diameter. The washer and rod stay centered in the cap.

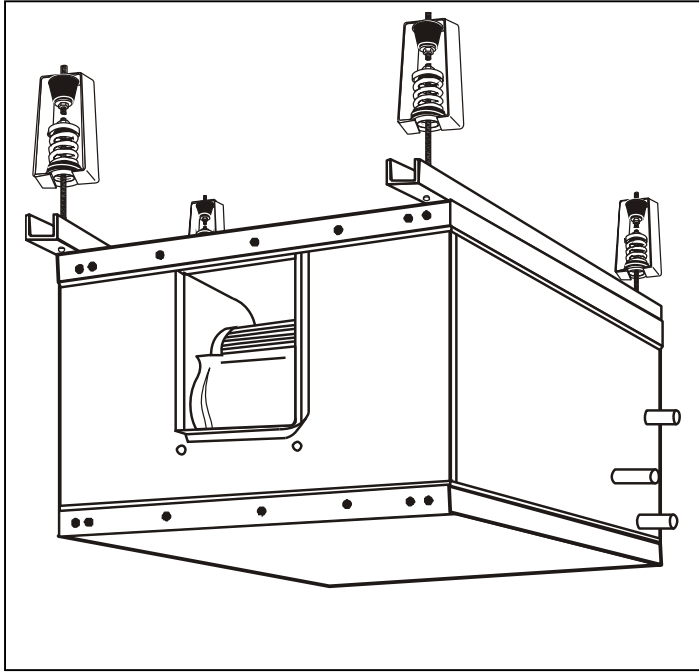


SH

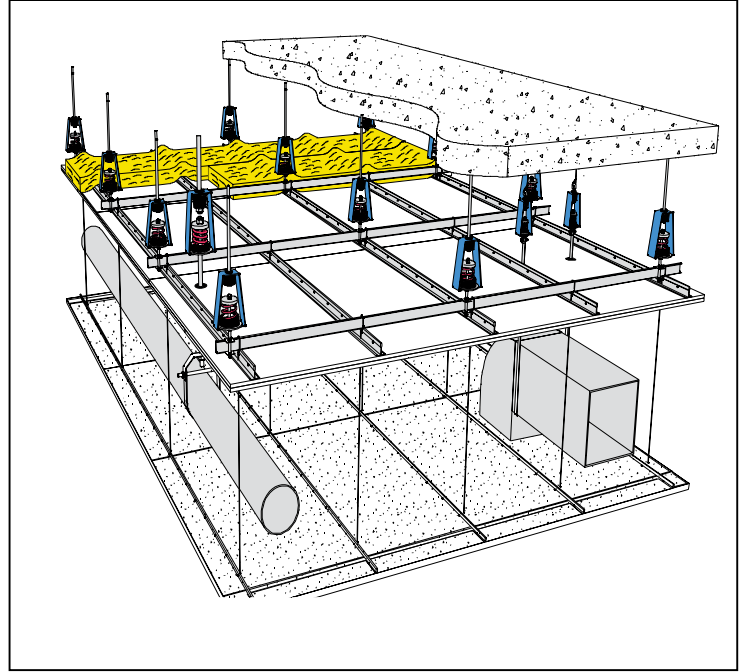
SPRING HANGER ISOLATOR

1" (25mm) Deflection

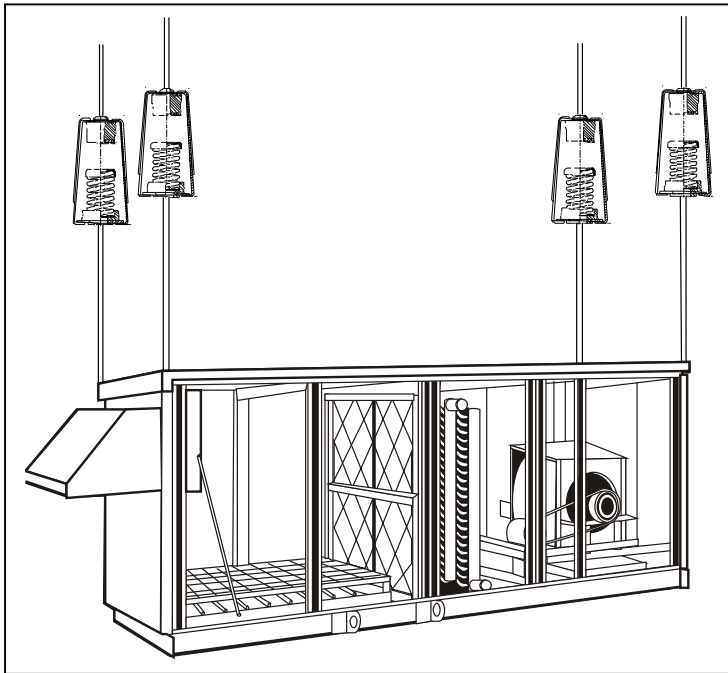
TYPICAL APPLICATION



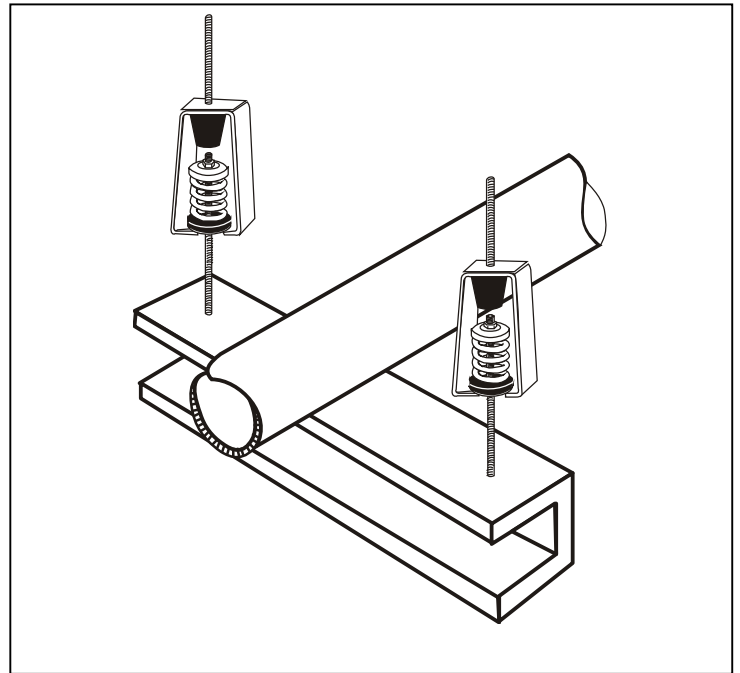
In-line Fan, Axial Fan



Ceiling System



Fan Coil Unit (FCU), AirHandling Unit (AHU)



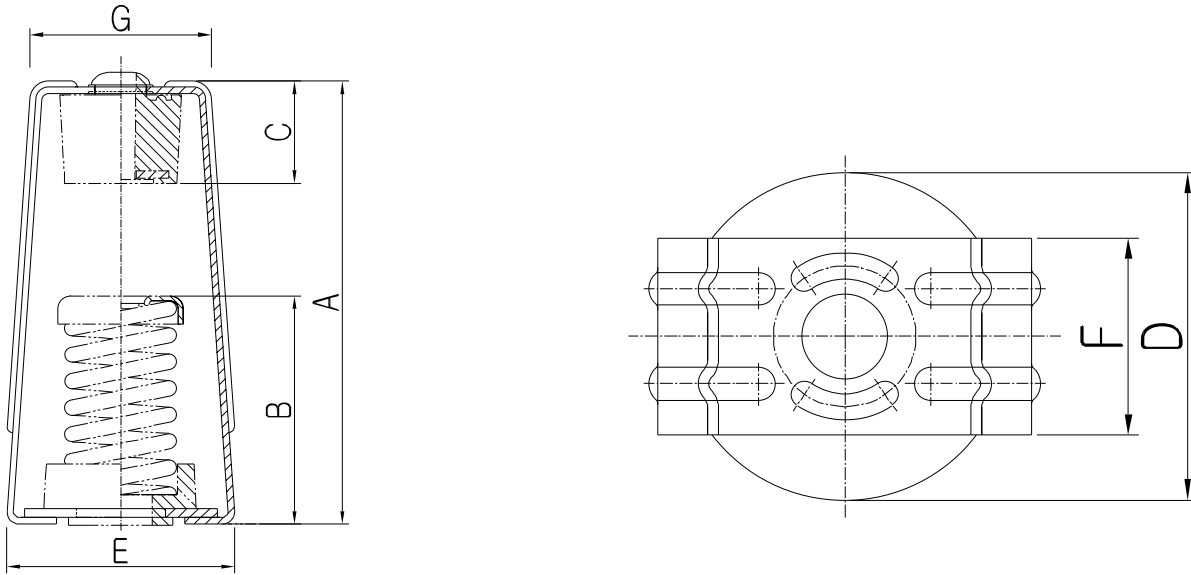
Piping & Duct Application

SH

SPRING HANGER ISOLATOR

1" (25mm) Deflection

DRAWING



DIMENSION & SELECTION GUIDE BY LOADS

TYPE	Capacity (Kg)	Spring constant (Kgf/mm)	Deflection (mm)	Color	Dimension (mm)								Spring Only	
					A	B	C	D	E	F	G	Hanging Bolt	Ø D	Freight height
SH-A-10	3 ~ 10	0.4	25	Pink	172	90	38	76	82	50	70	M10	44	76
SH-A-25	15 ~ 25	1.0	25	Yellow										
SH-A-50	30 ~ 50	2.0	25	Red										
SH-A-75	55 ~ 75	3.0	25	Black										
SH-A-100	80 ~ 100	4.0	25	Blue										
SH-B-150	110 ~ 150	6.0	25	Brown	215	122	45	100	118	60	90	M12	60	105
SH-B-200	160 ~ 200	8.0	25	White										
SH-B-300	220 ~ 300	12.0	25	Orange										
SH-B-400	320 ~ 400	16.0	25	Pink										
SH-C-500	420 ~ 500	20.0	25	Green	241	143	50	100	128	70	100	M16	72	122
SH-C-600	520 ~ 600	24.0	25	Blue										
SH-C-750	620 ~ 750	30.0	25	Black										



SEOUL OFFICE

1601-1, SEOCHO-DONG, SEOCH-GU, SEOUL, KOREA

TEL: +82 2 598 1988 FAX: +82 2 598 1989

Website : www.nsv.co.kr ; Email: overseas@nsv.co.kr

